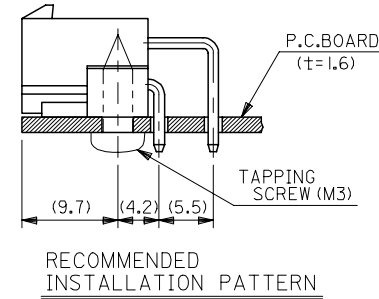
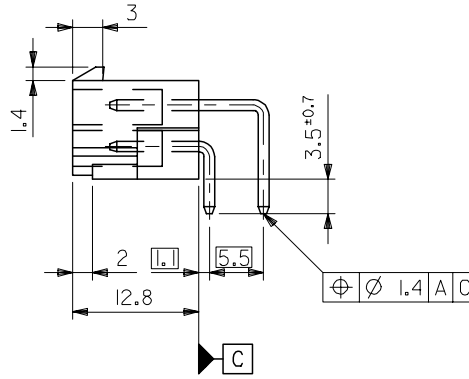
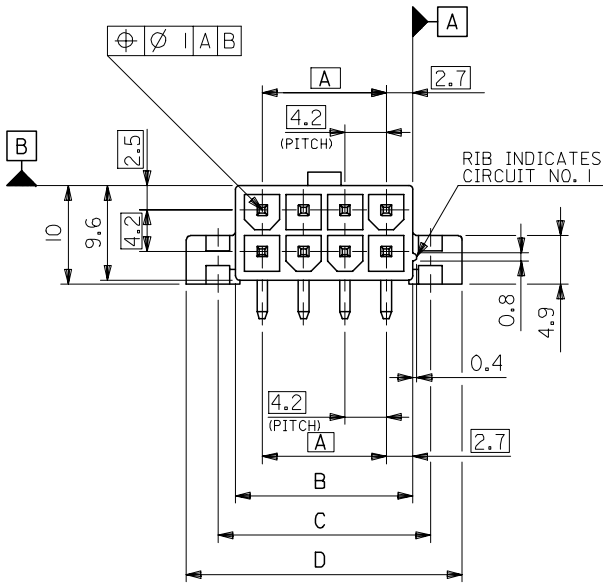
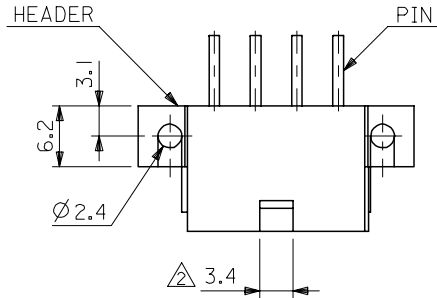


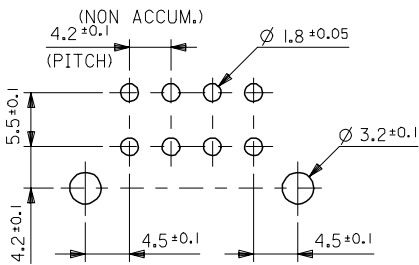
NOTES

1. MATES WITH : 5557 SERIES
- △ IN CASE OF 2 CIRCUITS HEADER, THIS DIMENSION SHOULD BE 4.2mm.
3. MATERIAL & FINISH

ENG. NO.	HEADER MATERIAL	PIN MATERIAL	FINISH OF PIN
5569-NAIGS	NYLON 66, UL94V-2	BRASS (1.07 SQUARE)	GOLD 0.76 μ m MIN. AND TIN 2.54 μ m MIN. OVER NICKEL 1.27 μ m MIN.
▲ -NAIGS-210	NYLON 66, UL94V-0		GOLD 0.38 μ m MIN. AND TIN 1.91 μ m MIN. OVER NICKEL 1.27 μ m MIN.
▼ -NAIGS2	NYLON 66, UL94V-2		GOLD 0.38 μ m MIN. AND TIN 1.91 μ m MIN. OVER NICKEL 1.27 μ m MIN.
▼ -NAIGS2-210	NYLON 66, UL94V-0		GOLD 1.27 μ m MIN. AND TIN 1.91 μ m MIN.
▼ -NAIGS3	NYLON 66, UL94V-2		GOLD 1.27 μ m MIN. AND TIN 1.91 μ m MIN.
5569-NAIGS3-210	NYLON 66, UL94V-0		GOLD 1.27 μ m MIN. AND TIN 1.91 μ m MIN.

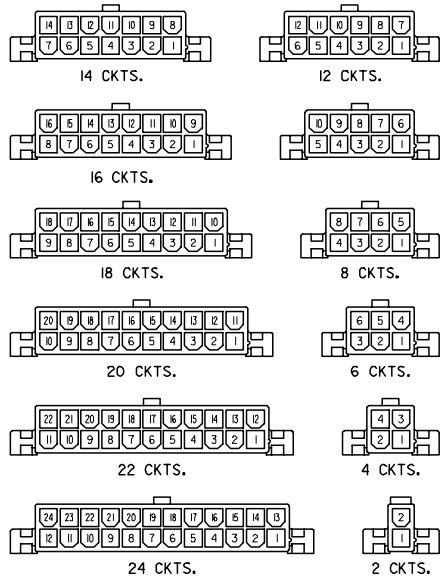


61.6	55.2	51.6	46.2	24
57.4	51	47.4	42	22
53.2	46.8	43.2	37.8	20
49	42.6	39	33.6	18
44.8	38.4	34.8	29.4	16
40.6	34.2	30.6	25.2	14
36.4	30	26.4	21	12
32.2	25.8	22.2	16.8	10
28	21.6	18	12.6	8
23.8	17.4	13.8	8.4	6
19.6	13.2	9.6	4.2	4
15.4	9	5.4	—	2
D	C	B	A	NO. OF CKTS.



RECOMMENDED P.C. BOARD PATTERN

REVISED EC NO: J2006-0562 DRW: TAKEMOTO 2005/08/19 CHK: TANAKA 2005/08/22 APPR: NUKITA 2005/08/30	GENERAL TOLERANCES (UNLESS SPECIFIED)		DIMENSION STYLE MM ONLY	SCALE 2:1	DESIGN UNITS METRIC	THIRD ANGLE PROJECTION
	10 UNDER	±0.4	DRAWN BY TNIITSU	DATE 1998/01/20	TITLE NEW MINI FIT CONN. RIGHT ANGLE HEADER ASS'Y WITH FLANGE MOLEX INCORPORATED DOCUMENT NO. SD-5569-NA1GS*-* SHEET NO. 1 OF 2	
	10 OVER 30 UNDER	±0.3	CHECKED BY SKUNISHI	DATE 1998/01/21		
	30 OVER	±0.2	APPROVED BY MFUKUSHIMA	DATE 1998/01/21		
	ANGULAR	±3 °	MATERIAL NO.			
DRAFT WHERE APPLICABLE MUST REMAIN WITHIN DIMENSIONS		SEE SHEET 2 OF 2				
A	SIZE A3	THIS DRAWING CONTAINS INFORMATION THAT IS PROPRIETARY TO MOLEX INCORPORATED AND SHOULD NOT BE USED WITHOUT WRITTEN PERMISSION				



CIRCUIT SIZE LAYOUT
(SCALE : 1-1)

				39-34-7241	5569-24A1GS-210	24
				39-34-7221	5569-22A1GS-210	22
				39-34-7201	5569-20A1GS-210	20
				39-34-7181	5569-18A1GS-210	18
				39-34-7161	5569-16A1GS-210	16
				39-34-7141	5569-14A1GS-210	14
				39-34-7121	5569-12A1GS-210	12
				39-34-7101	5569-10A1GS-210	10
				39-34-7081	5569-08A1GS-210	8
				39-34-7061	5569-06A1GS-210	6
39-34-7045	5569-04A1GS3-210	39-34-7043	5569-04A1GS2-210	39-34-7041	5569-04A1GS-210	4
39-34-7025	5569-02A1GS3-210	39-34-7023	5569-02A1GS2-210	39-34-7021	5569-02A1GS-210	2
EDP NO.	ENG. NO.	EDP NO.	ENG. NO.	EDP NO.	ENG. NO.	CKT. SIZE
5569-NA IGS3-210		5569-NA IGS2-210		5569-NA IGS-210		
				39-34-7240	5569-24A1GS	24
				39-34-7220	5569-22A1GS	22
				39-34-7200	5569-20A1GS	20
				39-34-7180	5569-18A1GS	18
				39-34-7160	5569-16A1GS	16
				39-34-7140	5569-14A1GS	14
				39-34-7120	5569-12A1GS	12
				39-34-7100	5569-10A1GS	10
				39-34-7080	5569-08A1GS	8
				39-34-7060	5569-06A1GS	6
39-34-7044	5569-04A1GS3	39-34-7042	5569-04A1GS2	39-34-7040	5569-04A1GS	4
39-34-7024	5569-02A1GS3	39-34-7022	5569-02A1GS2	39-34-7020	5569-02A1GS	2
EDP NO.	ENG. NO.	EDP NO.	ENG. NO.	EDP NO.	ENG. NO.	CKT. SIZE
5569-NA IGS3		5569-NA IGS2		5569-NA IGS		

REVISED EC NO: J2006-0562 DRW: TAKEMOTO 2005/08/19 CHK: M. TANAKA 2005/08/22 APPR: NUKITA 2005/08/30	GENERAL TOLERANCES (UNLESS SPECIFIED)		DIMENSION STYLE MM ONLY		SCALE ---	DESIGN UNITS METRIC	THIRD ANGLE PROJECTION
	10 UNDER	± ---	DRAWN BY TNIITSU	DATE 1998/01/20	TITLE NEW MINI FIT CONN. RIGHT ANGLE HEADER ASS'Y WITH FLANGE MOLEX INCORPORATED		
	10 OVER	30 UNDER	CHECKED BY SKUNISHI	DATE 1998/01/21			
	30 OVER	± ---	APPROVED BY MFUKUSHIMA	DATE 1998/01/21			
	ANGULAR	± --- °	MATERIAL NO.	DOCUMENT NO.	SHEET NO.		
DRAFT WHERE APPLICABLE MUST REMAIN WITHIN DIMENSIONS		SIZE A3	SEE CHART		SD-5569-NA1GS*-*	2 OF 2	

THIS DRAWING CONTAINS INFORMATION THAT IS PROPRIETARY TO MOLEX INCORPORATED AND SHOULD NOT BE USED WITHOUT WRITTEN PERMISSION